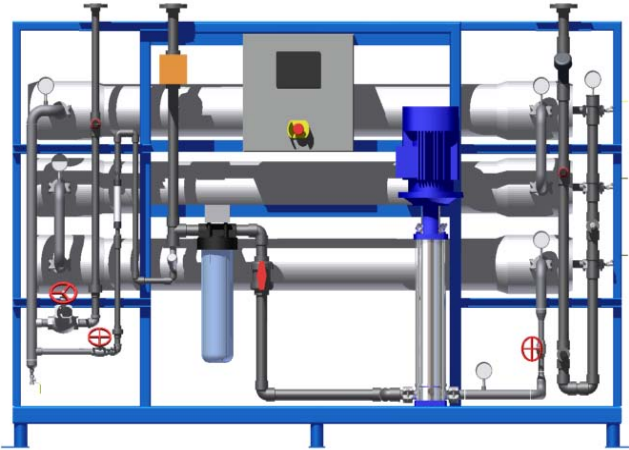




# Progressive Water Treatment, Inc.

## SD Series Reverse Osmosis Systems

60Hz Units from 5 – 40 GPM



3D Rendering of model #SDRO.8.20

### Standard Features:

- Automatic Inlet Valve
- 5 Micron Sediment Pre-filter
- Thin Film Composite (TFC) Membranes
- SST Multistage Pump, Motor, and Starter
- FRP Pressure Vessels
- Powder Coat Frame
- NEMA 12 Control Panel
- Automated Controls
- Feed/Product Conductivity Monitor
- Product/Concentrate Flow meters
- Panel Mounted Instruments and Indicator Lamps
- High Product Pressure Protection
- Low Pump Suction Pressure Protection
- SST Pressure Gauges
- Pre and Post Operation Flush
- Pretreatment Lockout
- Pump Discharge ,Reject Throttle Valves
- Sample Valves
- Low Pressure Piping is Sch. 80 PVC
- High Pressure Piping Sch. 10 304SS
- Reject Recycle Loop
- Factory Performance Tested

### Superior Quality:

The SD Series reverse osmosis systems from Progressive Water Treatment, Inc. (PWT) are designed to provide the end user with superior water quality for the application at hand. Each project is approached with the goal of providing the best quality water at the best possible price, without cutting corners when it comes to quality of components.

### Exceptional Performance:

Each system is equipped with quality components designed to perform for years to come. All skids are powder coated for excellent corrosion resistance. Protection for the major components involving the highest cost to replace are protected on every system. No matter what your application, PWT's SD Series RO Systems will provide the Superior Quality and Exceptional Performance you expect for your project.

### Available Options:

- Chemical Feed Systems
- Media Filtration (Carbon, Multi-Media, Iron Removal, etc.)
- Water Softening Pre or Post treatment
- Instrumentation Brand Options and upgrades
- Upgrade to PLC
- HMI (Human Machine Interface)
- Soft Start or Variable Frequency Drive (VFD) for pump control
- Automated Reject Valve
- Product Water Divert valve
- PH Monitor/Controller
- Clean In Place System



# Progressive Water Treatment, Inc.

## SD SERIES Design Performance

MODEL	SDRO.4.5	SDRO.4.10	SDRO.4.15	SDRO.8.20	SDRO.8.30	SDRO.8.40
Permeate Flow GPM	5	10	15	20	30	40
Concentrate Flow GPM	2.3	3.4	8.1	10.4	6.5	10
Recycle Flow GPM	1	2	0	3	3	3
Recovery % (Typ.)	60 - 75	65 - 75	65 - 75	65 - 75	70 - 80	70 - 80
System Array	1:1:1	2:1	3:1	1:1:1	1:1:1	2:1
Vessel Qty./ Length	3 / 2 membranes	3 / 4 membranes	3 / 4 membranes	3 / 2 membranes	3 / 3 membranes	3 / 3 membranes
Membrane Qty./Size	6 / 4" x 40" LE	12 / 4" x 40" LE	16 / 4" x 40" LE	5 / 8" x 40" LE	8 / 8" x 40" LE	9 / 8" x 40" LE
Pump Mtls ./ Hp	304 SST / 3	304 SST / 5	304 SST / 5	304 SST / 7.5	304 SST / 10	304 SST / 15
Filter Housing Qty./Type	1 / PP	1 / PP	1 / PP	1 / PP	1 / ABS	1 / ABS
Cart. Filter Qty./Size	1 / 10"	1 / 10"	1 / 10"	1 / 20"	1 / 26 ¼"	1 / 26 ¼"
High Voltage Requirement	230- 460v/3ph/60 Hz	230- 460v/3ph/60 Hz	230- 460v/3ph/60 Hz	230- 460v/3ph/60 Hz	230- 460v/3ph/60 Hz	230- 460v/3ph/60 Hz
Control Circuit	110v/1ph/60 Hz	110v/1ph/60 Hz	110v/1ph/60 Hz	110v/1ph/60 Hz	110v/1ph/60 Hz	110v/1ph/60 Hz
Air Requirement	60-80 psi	60-80 psi	60-80 psi	60-80 psi	60-80 psi	60-80 psi
Inlet Size/Type	½" Flange	1" Flange	1" Flange	1½" Flange	1½" Flange	1½" Flange
Permeate Size/Type	½" Flange	1" Flange	1" Flange	1" Flange	1" Flange	1½" Flange
Concentrate Size/Type	½" Flange	½" Flange	½" Flange	1" Flange	1" Flange	1" Flange
Dimensions LxWxH	28" x 110" x 68"	28" x 176" x 72"	28" x 176" x 72"	32" x 110" x 72"	32" x 146" x 72"	32" x 146" x 72"